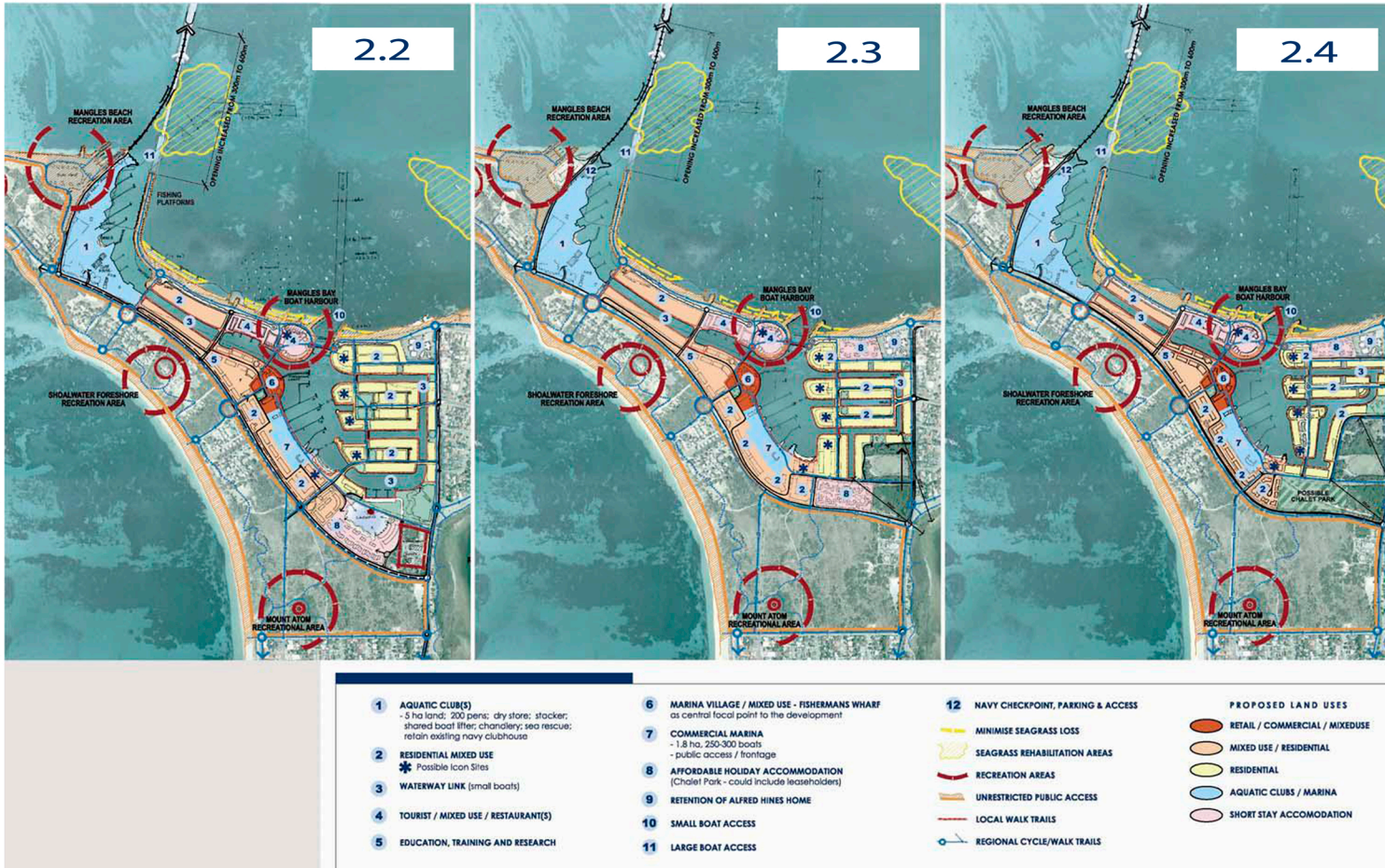
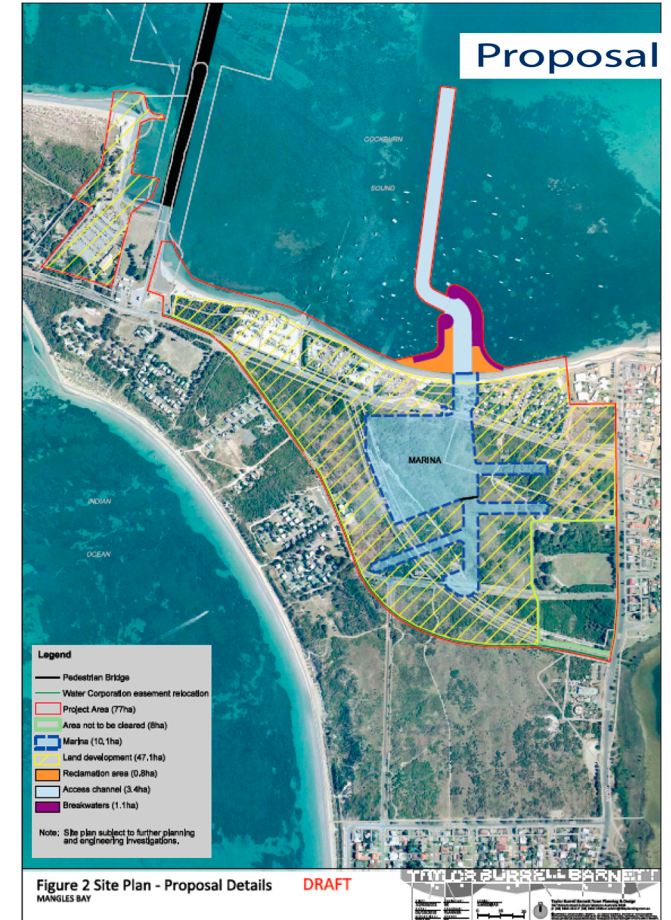


Proposed Development Options (2006) x 3

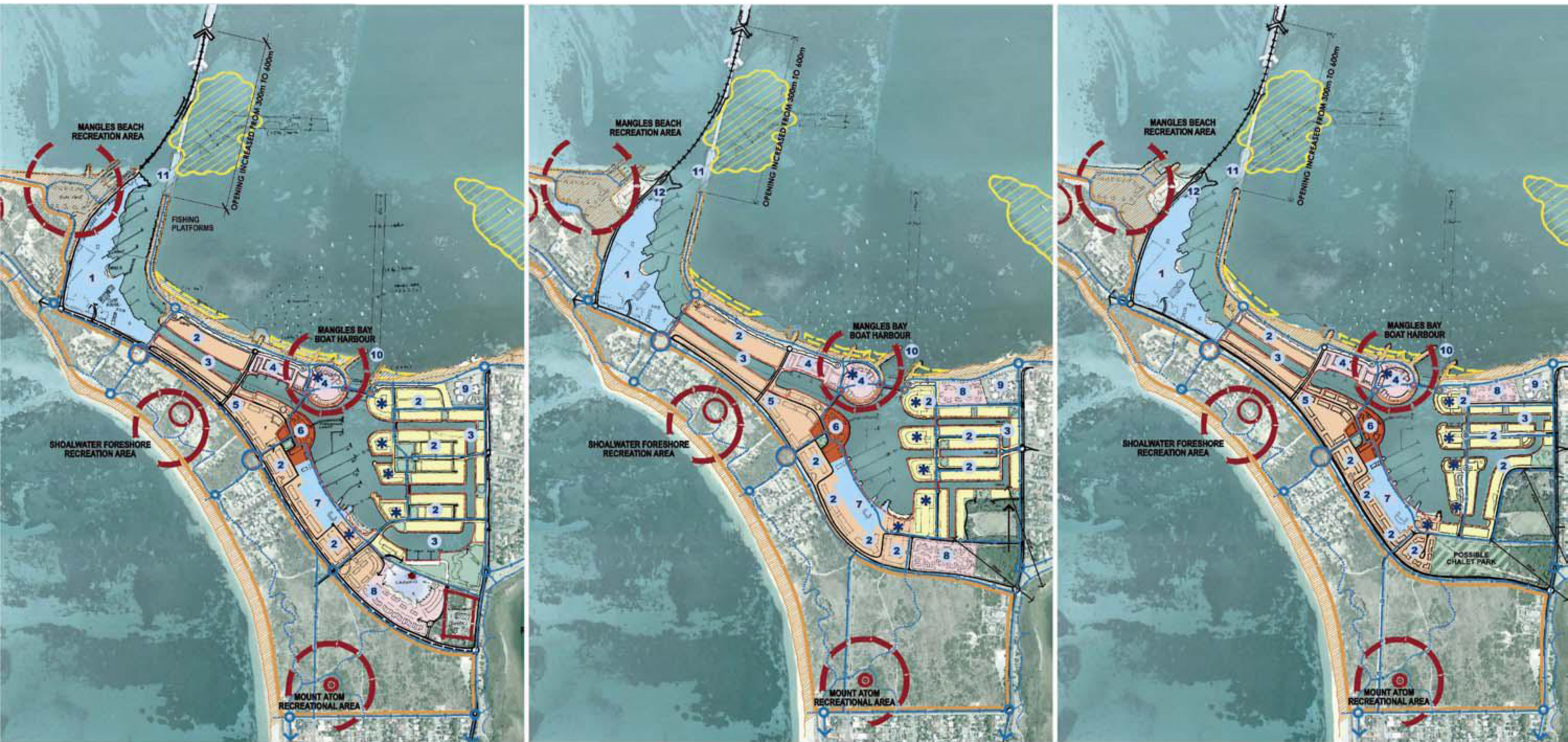


Current Proposal 2011 (Feb)



OPTION	Option 2.2	Option 2.3	Option 2.4	Proposal
Seagrass loss - direct	6.0 ha	6.0 ha	5.4 ha	5 ha
- indirect	3-4 ha	3-4 ha	3-4 ha	1 ha
Total Vegetation Clearing	53 ha	45.5 ha	40.1 ha	38 ha
Clearing within Bush forever	43.9 ha	36.3 ha	30.9 ha	31 ha
Distance between marina and Lake Richmond	200 m	330 m	350 m	400 m

Proposed Development Options x 3 (2006)



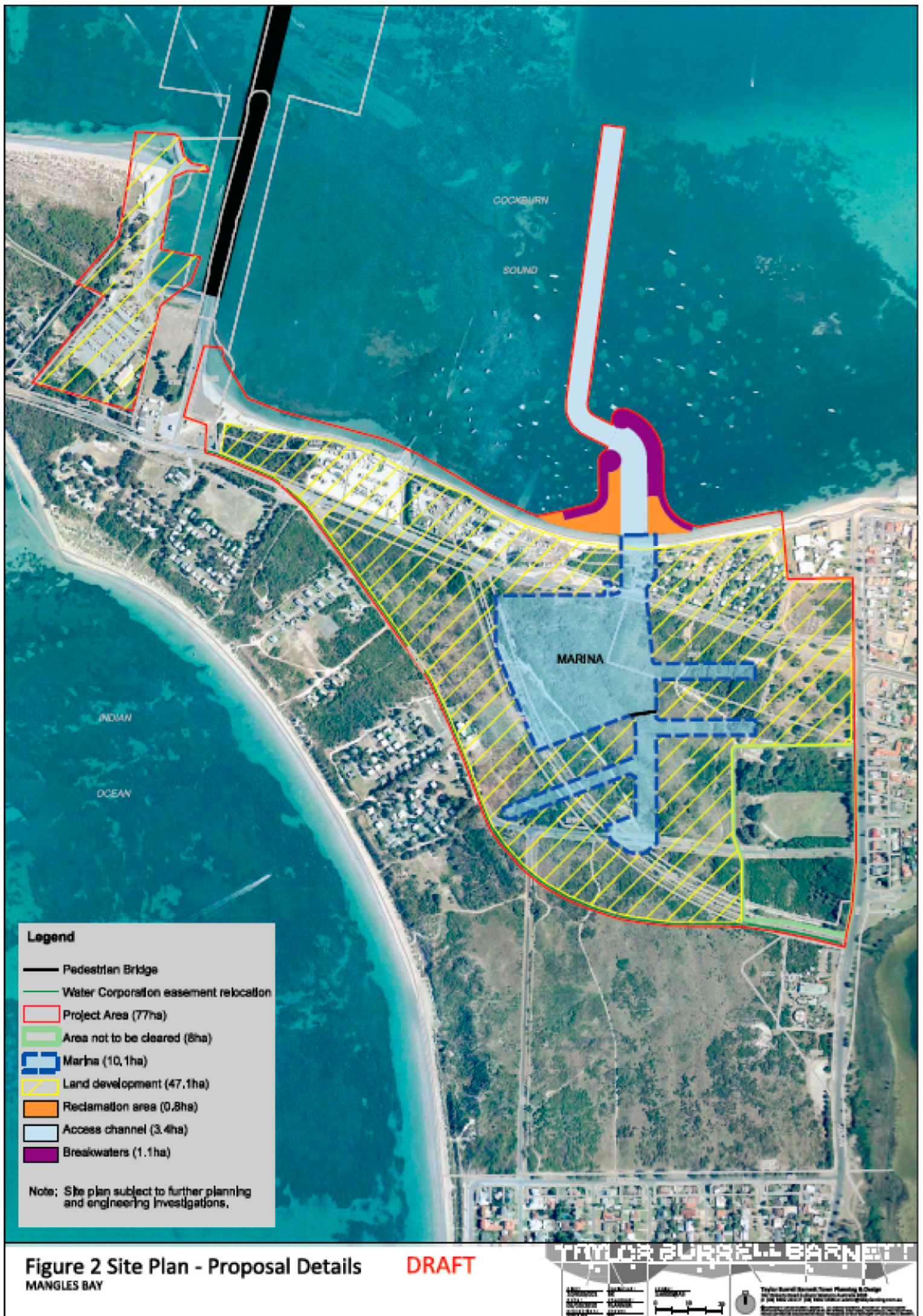
- 1** AQUATIC CLUB(S)
- 5 ha land; 200 pens; dry store; stacker; shared boat lifter; chandlery; sea rescue; retain existing navy clubhouse
- 2** RESIDENTIAL MIXED USE
* Possible Icon Sites
- 3** WATERWAY LINK (small boats)
- 4** TOURIST / MIXED USE / RESTAURANT(S)
- 5** EDUCATION, TRAINING AND RESEARCH

- 6** MARINA VILLAGE / MIXED USE - FISHERMANS WHARF as central focal point to the development
- 7** COMMERCIAL MARINA
- 1.8 ha, 250-300 boats
- public access / frontage
- 8** AFFORDABLE HOLIDAY ACCOMMODATION (Chalet Park - could include leaseholders)
- 9** RETENTION OF ALFRED HINES HOME
- 10** SMALL BOAT ACCESS
- 11** LARGE BOAT ACCESS

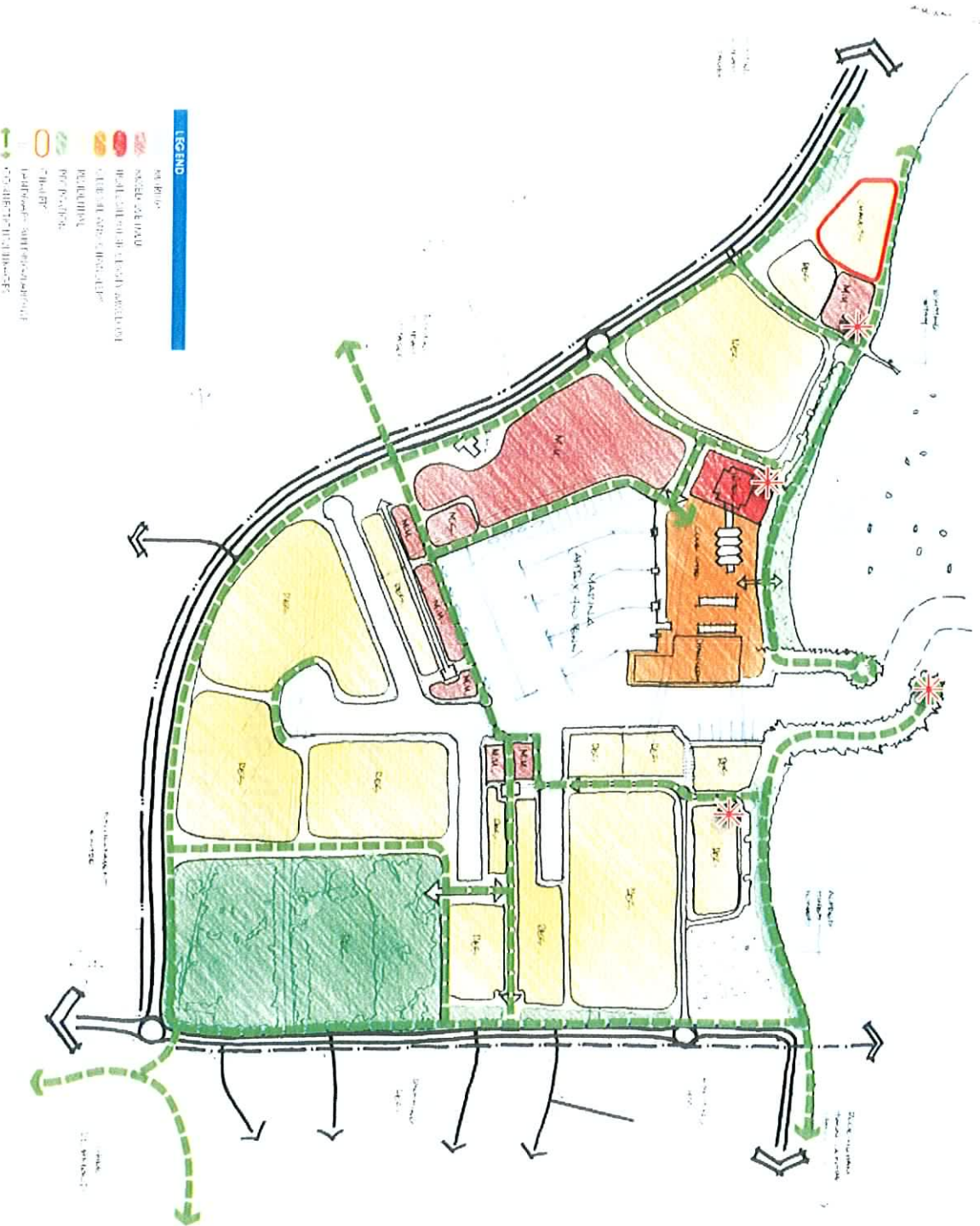
- 12** NAVY CHECKPOINT, PARKING & ACCESS
- MINIMISE SEAGRASS LOSS
- SEAGRASS REHABILITATION AREAS
- RECREATION AREAS
- UNRESTRICTED PUBLIC ACCESS
- LOCAL WALK TRAILS
- REGIONAL CYCLE/WALK TRAILS

- PROPOSED LAND USES**
- RETAIL / COMMERCIAL / MIXED USE
 - MIXED USE / RESIDENTIAL
 - RESIDENTIAL
 - AQUATIC CLUBS / MARINA
 - SHORT STAY ACCOMMODATION

Mangles Bay Proposal (2011, Feb)



Mangles Bay Concept - Option 1



Mangles Bay Concept - Option 2



LEGEND

- Main Road
- Access Road
- Commercial/Industrial
- Residential
- Public/Community
- Waterfront
- Green Space
- Sewerage Treatment Plant
- Water Treatment Plant
- Bridge
- Mangles Bay Wharf
- Mangles Bay Marina